

ConnectinGEO and ENEON ready to start

Coordination, gaps and priorities in GEOSS EO networks



Joan Masó (Joan.Maso@uab.cat), Ivette Serral (ivette@creaf.uab.cat) CREA

Project starting date

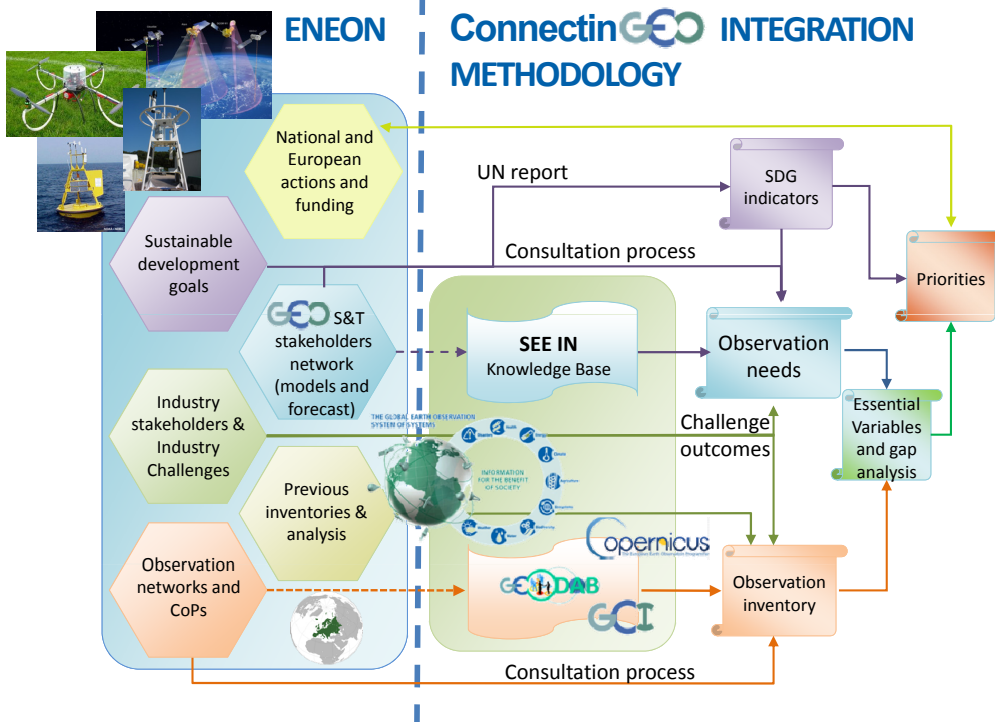
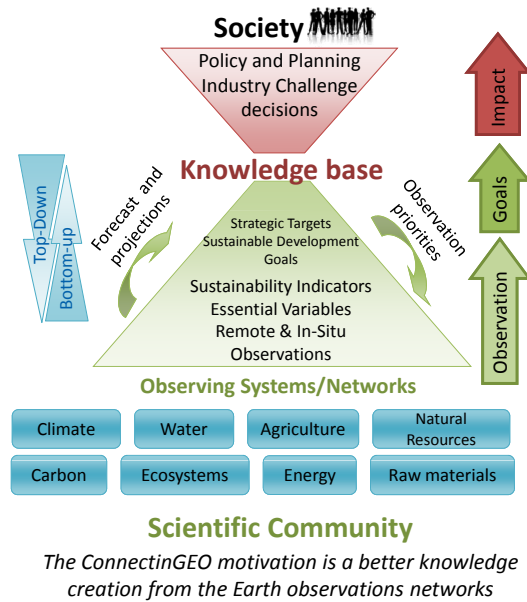
1st February 2015



ConnectinGEO's is a Coordinate and Support Action project in the Horizon 2020 program aiming to link existing Earth Observation networks with science, the private sector and the GEOSS and Copernicus stakeholders. Main objectives are to **enable ENEON** and contribute to the monitoring of the UN SDG.

ENEON is the **European Network of Earth Observation Networks**, including space-based, airborne and in-situ observations networks with the goal of enhancing the use of Earth observations for assessments, forecasts, and predictions of GEOSS SBA topics and Copernicus services.

The **United Nations Sustainable Development Goals (UN SDG)** are an outcome of the Rio+20 United Nations Conference on Sustainable Development. Better coordinated EO can contribute to **monitor** the SDG **progress** and to **quantify indicators** of their achievements.



ENEON will discuss joint strategies across the observation networks to provide an integrated and harmonized perspective.

ConnectinGEO will formalise and implement a methodology to translate user knowledge needs into indicators based on Essential Variables (EV) measured by Earth Observation networks. This will help us to define new **observation requirements**, detect gaps and recommend priorities.

ENEON is open to contributors and users from:

- **European networks** for space-based, airborne and in-situ observations, with particular emphasis in:
 - Thematic observation networks represented by a partner in the project
 - Sentinel missions and in-situ support data responsible (including **Copernicus** services)
- **GEOSS S&T Stakeholder Network** and **GEOSS CoPs**
- **SMEs and industry sector** (represented by **EARS**)
- **European and National funding agencies** and programs (connection to the ERA in EO)

ConnectinGEO is a 2 years project. We have to move fast. We have not started yet but we are already preparing the first ENEON workshop and collaborating with the 3rd and 4th GEOSS S&T stakeholders meeting, both in March 2015

ConnectinGEO multi-faceted approach to analyze and detect gaps of the European EO networks:

- **Top-down approach:** Derive sustainability indicators that are needed to monitor progress towards GEOSS Strategic Targets and SDGs, and it will infer the EV that connect these indicators with the observable quantities by remote sensing or in-situ sensors.
- **Bottom-up approach:** direct dialog with members of ENEON
- **Bottom-up approach:** an observation inventory will be populated from the GEODAB and carefully analysed.
- **Bottom-up approach:** SMEs will participate in pilots that will transfer experiences between CoPs and generate new products based on open access GEOSS EO data (GEOSS data CORE). Gaps and other obstacles that challenge the innovation process for industry will be reported.